

# Application Manual

## Kebulen heat shrinkable tube C50-M



1 Slide the shrinktube onto the pipe, including the protective foil, before making the pipe connection.



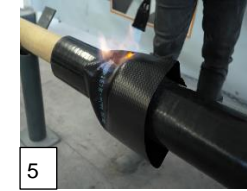
2 Dry the surface to be coated with a propane gas flame.



3 Clean and roughen the surface by a suitable process (e.g. blasting, hand wire brush, lubricating paper. 8 GW 15).



4 Position the shrinktube centrally over the socket joint. Bring the weld seam of the shrinktube into position. Remove the protective foil from the side.



5 Shrink the shrinktube with a soft-set, yellow propane flame in a uniform movement in the circumferential direction, starting at the top center.



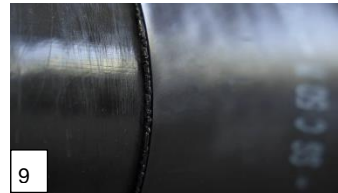
6 First shrink the shrinktube completely onto the pointed end.



7 Next, shrink the heat-shrink tubing onto the socket pipe.



8 The shrinking process is finished when the shrinktube fits closely everywhere and ....



9 ...at the end of the shrinking process, the butyl rubber spills out.